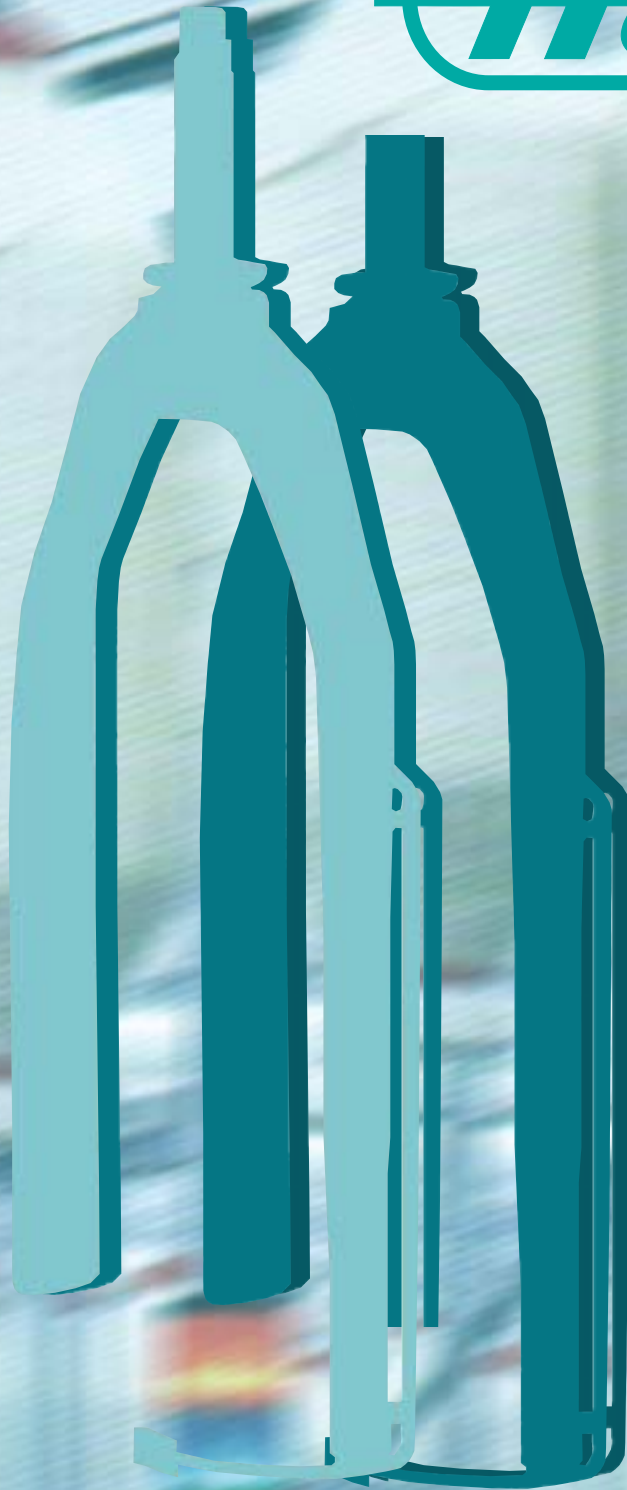




Holz



Flyers and accessories for all roving frames
用于各型号粗纱机的锭翼及配件



High Speed-Flyers

Made of special alloy, with cast-in mirror-polished stainless steel tube. Closed design, according to the state-of-the-art of the textile technology.

Models for all kinds of speed frames, bobbin measurements, and number of revolutions are available.

The high precision dynamic balancing of all models ensures a smooth running of the frame at technologically highest possible rotational speed.

In connection with our twist cap system, this guarantees highest quality of the roving.

高速粗纱机锭翼

采用特种合金浇铸, 镜面抛光效果的不锈钢管导纱通道, 依照纺纱技术要求的封闭锭翼。

可提供具有不同卷装尺寸和粗纱机速度的锭翼。

可使各型号锭翼达到高精度的动平衡, 确保粗纱机在最高工艺速度时, 平稳运行。

使用我们提供的假捻器, 可确保纺制高质量的粗纱。

Flyer models UGR/UGRL



for roving frames with conventionally attached flyers.

Closed design, covering the full range of bobbin measurements from 9x4" up to 14x7".

Rotational speed up to 1400 min⁻¹. Also available are flyers with different lengths for front row (UGR) and back row (UGRL) to equalize the roving angle.

Fitting for the following roving frame types, for instance:

Howa Max Rove, RM 714.../
Marzoli BC 3.../Platt.../Rieter F 1/1.../
Saco Lowell.../Taschkent P 192, 260
Textima 1501, 1502.../
Toyoda FH 2.../Whitin.../
Zinser 621, 623, 631, 650.../

UGR/UGRL型锭翼

托锭粗纱机锭翼: 全封闭式锭翼, 粗纱的成形范围: 从9X4"到14X7"。

锭翼的转速达1400转/分钟 (RPM)。
可提供前排锭翼 (UGR) 与后排锭翼 (UGRL) 不同的锭杆高度, 以保持前后排锭翼粗纱纺纱角相同。

如: 可提供用于以下粗纱机的锭翼:

日本丰和Howa Max Rove, RM 714.../
意大利马佐利Marzoli BC 3.../Platt.../
瑞士立达Rieter F1/1.../Saco Lowell.../
Taschkent P 192, 260
Textima 1501, 1502.../
日本丰田Toyoda FH 2.../Whitin.../
德国青泽Zinser 621, 623, 631, 650.../

Flyer models UGK/UGKL/UGKLS

for roving frames with top driven flyers. Closed design, covering the full range of bobbin measurements from 12x5,5" up to 20x8".

Rotational speed up to 1800 min⁻¹. Also available are flyers at different length for front and back row to equalize the roving angle.

Fitting for the following roving frame types, for instance:

Marzoli BC 16, BCX 16.../
Rieter F3, F5.../Schlumberger BM 14.../
Zinser 660, 661, 670, 680.../



UGK/UGKL/UGKLS型锭翼

悬式粗纱机锭翼: 全封闭式锭翼, 粗纱的成形范围: 从12X5.5"到20X8"。

锭翼的转速达1800转/分钟 (RPM)。
可提供前排锭翼与后排锭翼不同的锭杆高度, 以保持前后排锭翼粗纱纺纱角相同。

如: 可提供用于以下粗纱机的锭翼:

意大利马佐利Marzoli BC 16, BCX 16.../
瑞士立达Rieter F3, F5.../
Schlumberger BM 14.../
德国青泽Zinser 660, 661, 670, 680.../

Flyer models UGKM/UGKLM



for roving frames with top driven flyers and center spindles. Closed design, covering the full range of bobbin measurements from 12x5,5" up to 20x7". Rotational speed up to 1800 min⁻¹. Also available are flyers at different length for front and back row to equalize the rowing angle.

Fitting for the following roving frame types, for instance:

Chinese models.../Grossenhainer BF 228, BF 91-1, KF 91-6.../Howa RMK, RME.../Textima 1505/1/2/3/6, 1506.../Toyoda FL6, FL12, FL14, FL16, FL 100.../Zinser 668.../

UGKM/UGKLM 型 锭翼

悬式中心锭杆粗纱机锭翼:全封闭式锭翼,粗纱的成形范围:从12x5.5"到20x7"。

锭翼的转速达1800转/分钟(RPM)。

可提供前排锭翼与后排锭翼不同的锭杆高度,以保持前后排锭翼粗纱纺纱角相同。

如: 可提供用于以下粗纱机的锭翼:

中国制造的各悬式粗纱机/

Grossenhainer BF228, BF91-1, KF91-6.../

日本丰和Howa RMK, RME.../

Textima 1505/1/2/3/6, 1506.../

日本丰田Toyoda

FL6, FL12, FL14, FL16, FL100 /

德国青泽Zinser 668.../

Flyer models FDR

Double leg flyers for flax and linen. Available for all international rowing frames, with bobbin sizes from 9x4,25" to 12x6,5".

Made of specially alloyed light metal with cast-in steel reinforcements and heat-treated roving inlets.

The heat-treated pig tails are exchangeable.

Fitting for the following frames, for instance:

Mackie.../

Bomatex.../



FDR 型锭翼

双通道锭翼用于亚麻纺纱:适用于目前各种型号的亚麻粗纱机,粗纱的成形范围:从9x4.25"到12x6.5"。

采用特种轻质合金浇注,钢结构加强及在粗纱入口处采用热处理工艺。

可拆卸经热处理的锭翼压掌导纱钩。

如: 可提供用于以下粗纱机的锭翼:

Mackie.../

Bomatex.../

Flyer Washing Device H20



H20

Patented washing method for the cleaning of the stainless steel tube. Especially firmly installed, top driven flyers can be cleaned efficiently in the frame, by using

- hot water up to 80°C
- high pressure up to 7 bar

Very good cleaning results are guaranteed.

A closed cycle system of the water assures a perfect and dry working process.

H20型锭翼清洗机

H20是粗纱机锭翼不锈钢管纱道清洗的专利清洁设备。使用：

- 80° C 的热水
- 热水压力为 7 bar

可高效地清洗以特殊方式牢固安装在粗纱机上的悬式锭翼。

可确保非常好的清洗效果。

封闭式的水循环系统确保了完美和干燥的工作过程。



Universal Washing Device H25



H 25

The Universal Washing Device for all cleaning tasks in connection with the maintenance.

Cleaning of flyer tubes in the roving frame, or washing of bigger parts in the work shop.

Adjustable washing pressure up to **10 bar** and adjustable washing temperature up to **100°C** assure perfect cleaning results for all parts, from the gear wheel to the aprons.

H25多用型清洗机

H25多用型清洗机，可完成保养工作中的所有清洗工作。

可清洁粗纱机上锭翼纱道及工作间中大的零件。

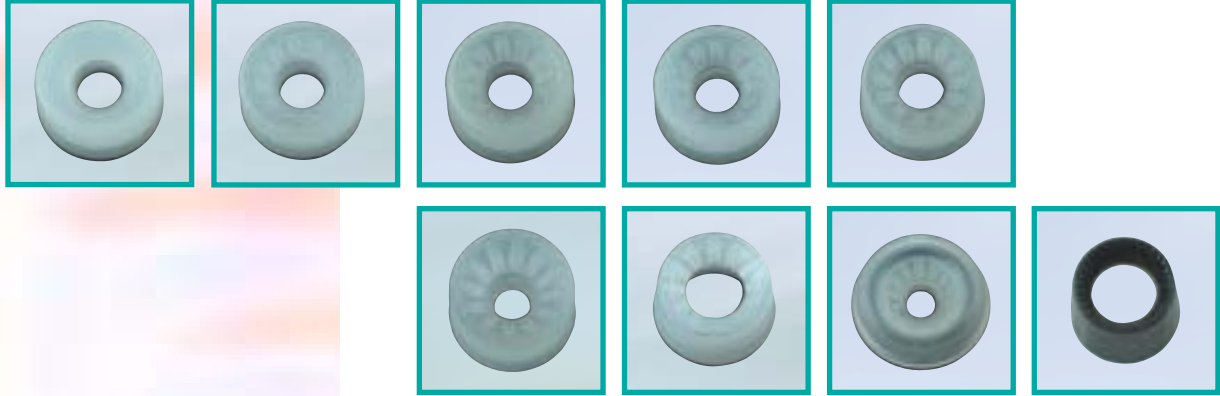
清洗水的压力可调整到 10bar, 温度达 100° C, 以确保从齿轮到皮圈所有零件完善的清洗效果。

Twist Caps

Our twist cap system is adapted to the textile technology

- from fine to coarse counts
- from 100% cotton, over blends to 100% polyester
- from combed to carded

fitting on all HOLZ-Flyers and many other original flyers. More twist caps with special design can be supplied on request.



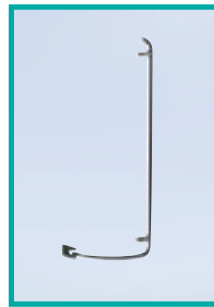
假捻器

我们的假捻器可适用于以下纺纱工艺：

- 由细到粗的支数；
- 由100%的棉，混纺到100%的涤纶纤维；
- 由精梳到普梳。

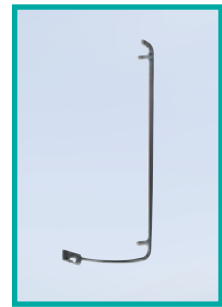
采用HOLZ锭翼及其他原装锭翼，均可按要求提供专门设计的各型号假捻器。

Pressers



All pressers are made of high quality carbon steel with a specially treated surface. This prevents a cutting-in of the presser, and guarantees a long service life.

- Exchangeable wear and tear inserts made of a special material
- Patented design to reduce roving hairiness
- Very simple installation, with low friction for automatic threading, and a reliable bobbin build up

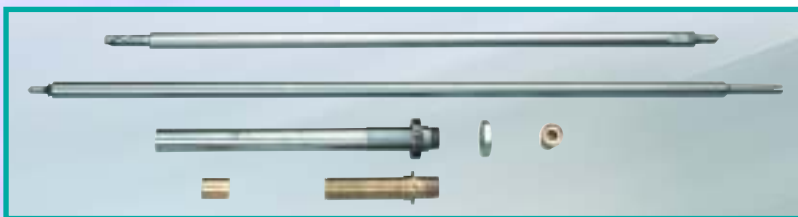


压掌

所有压掌由高碳合金钢制造，表面采用了特殊的热处理工艺。使其压掌可防止压掌断裂，增加了耐磨度，保证压掌较长的使用寿命。

- 可更换磨损和断裂的部件，由特殊材料制造；
- 具有专利设计可降低粗纱毛羽；
- 安装简单，低摩擦阻力的卷绕和可靠的接头。

Spindels • Long Collars • Foot Steps



Various accessoires for Roving Frames like spindles, long collars, foot steps housings and bearing units are made of best materials. This guarantees optimum function and high durability.

锭杆, 长锭套, 锭脚

粗纱机的各类配件，如：锭杆，长锭套，锭脚螺母和轴承，均有优质材料制造，确保其最佳功能和较长的使用寿命。

HOLZ – a unique label for top-quality flyers.

More than 40 years of experience in the field of flyer technology guarantee optimum solutions for any flyer-specific requirements—worldwide.

Our permanent improvement and innovation processes manifest our top position, both in the fields of technology as well as quality. Modern machines, best basic material, and our skilled staff as well as our worldwide service net ensure the continually high quality of all **HOLZ** products.

HOLZ- 是高质量锭翼的唯一商标。在锭翼制造技术方面拥有40多年的经验，确保了世界范围内任何特殊需要锭翼提供最佳方案。我们不断的改进与创新，使得我们的制造技术与产品质量处在领先地位。

先进的加工设备 优质的原材料，高技术水平的职员队伍加之我们世界范围的销售服务网络，确保**HOLZ**产品不断的高质量。



ERNST HOLZ
Fabrik für Textilmaschinenzubehör
Geheime Mühle
D-71334 Waiblingen-Beinstein

Phone: 07151-32954
Fax: 07151-35804
ernstholz@ernstholz.de
www.ernstholz.de